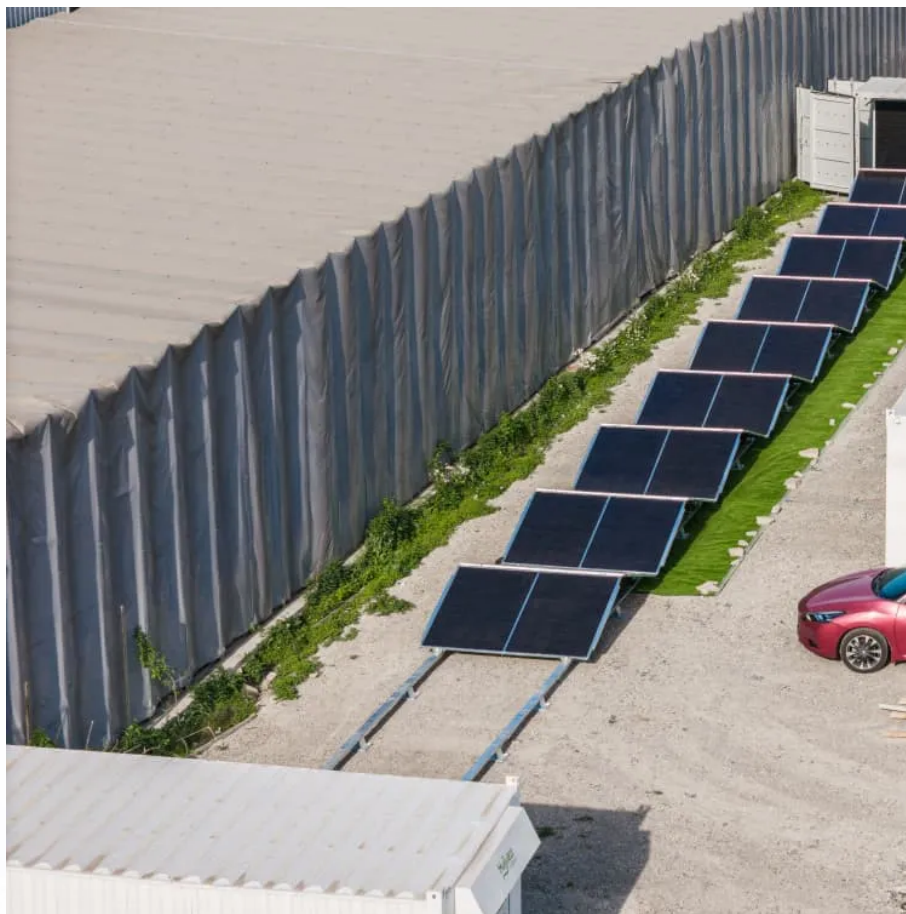


100W solar panel inverter





Overview

What kind of inverter do I need for a 100 watt solar panel?

You would need a 12 V DC to 220v AC, 300 to 600 Watt range inverter, or converter for the power generated from the 100-watt solar panel. The solar panel's power generation could be different based on various circumstances. What does a power inverter do?

The inverter is also known as the AC driver or Variable frequency drive.

Does a solar panel need a 12V inverter?

A 12V 100W solar panel needs a 12V 200W inverter to run AC powered appliances, and at least a 100ah battery to store energy. A 12V 5A PWM or MPPT charge controller is required to keep the battery from overcharging. With this system you can draw 100W from the inverter for 3 to 4 hours or 200W for 1 and half hours.

What size solar inverter do I Need?

This equates to the ratio of the DC power in the solar system to the AC power output from the inverter. For most solar systems, this ratio is going to be greater than 1, but less than 1.25. So for a 100W solar panel, the size of the inverter in this system should be greater than 100W and less than 125W. 2. Why is the size of the inverter important?

.

How much power does a solar inverter use?

Your inverter draws power from your battery to run AC appliances. When a solar panel charges a battery, around 15% of the energy may be lost. Thus, if the solar panel is 85% efficient the battery will receive $600 \times 0.85 = 510$ watts. Let us suppose you have a 12V battery and it is 50% charged.



100W solar panel inverter

What Size Inverter Is Best for a 100W Solar Panel?

Jul 11, 2023 · What Size Inverter is Suitable for a 100W Solar Panel? Think about it like this, and each panel will require a personal inverter to convert the Photonic energy into direct current, ...

High Efficiency 100W Solar Inverters for Reliable Power

Types of 100W Solar Inverters: A Complete Guide for Buyers A 100-watt solar inverter is a compact and efficient solution for converting DC power generated by solar panels into usable ...

Best Inverteer 100w Solar [Updated: December 2025]

Aug 5, 2025 · Best inverteer 100w solar: Our Top 5 Picks SOLPERK 100W Solar Battery Charger & MPPT Controller Kit - Best 100W inverter for off-grid solar Renogy E.Flex-CORE 100W ...

100w Solar Inverter

China 100w Solar Inverter wholesale - Select 2025 high quality 100w Solar Inverter products in best price from certified Chinese Solar Panel manufacturers, Solar System suppliers, ...

What size inverter for 100 watt solar panel?

Sep 6, 2023 · For a 100-watt solar panel, the ideal inverter size is within the 300 to 600-watt range, specifically a 12V DC to 220V AC model. This is crucial because the inverter serves as ...

100W Solar Panel: Power Output, Charging ...

May 27, 2025 · From off-grid camping to emergency backup, the 100W solar panel is now among the most sought-after options for portable power ...

What Size Inverter Do I Need for a 100 Watt ...

Aug 11, 2024 · However, do not install an inverter that is much larger than the probability of the solar panels, as this may also reduce the efficiency of ...

Amazon : Complete Solar Inverter Kit

Jun 3, 2025 · Complete Solar Kit: This Solar Power System includes a 100W 12V Solar Panel, a 50A Charge Controller, and an Inverter. Compact and portable, it is perfect for Outdoor ...

What Size Inverter Do I Need for a 100 Watt Solar Panel

Aug 11, 2024 · However, do not install an inverter that is much larger than the probability of the solar panels, as this may also reduce the efficiency of the solar panels. CONCLUSION: For a ...

What size inverter for 100 watt solar panel?

Sep 6, 2023 · For a 100-watt solar panel, the ideal inverter size is within the 300 to 600-watt range, specifically a 12V DC to 220V AC model. This is ...



What Size Inverter For a 100W Solar Panel?

How to Calculate Solar Inverter Size Important Reminders on The Calculations Do You Need A Solar Inverter? Can I Connect Several 100W Solar Panels to An Inverter? Tips For Using An Inverter with Solar Panels Conclusion If you want to build a solar array you need more than 100 watts. Fortunately you can connect several of these to gain more power. But make sure the inverter has enough capacity for what you need. The number of solar panels you can connect to inverter depends on its capacity. If the inverter is 200W, you can only use 2 x 100W solar panels maximum. I See more on portablesolarexpert Made-in-China 100w Solar Inverter - Made-in-China China 100w Solar Inverter wholesale - Select 2025 high quality 100w Solar Inverter products in best price from certified Chinese Solar Panel manufacturers, Solar System suppliers, ...

What Size Inverter For a 100W Solar Panel?

A 12V 100W solar panel needs a 12V 200W inverter to run AC powered appliances, and at least a 100ah battery to store energy. A 12V 5A PWM or MPPT charge controller is required to keep ...

What Size Inverter Do I Need for a 100 Watt ...

Wondering what size inverter you need for a 100 watt solar panel? Here's how to find the right inverter and calculate its size.

100W Solar Panel: Power Output, Charging Time, and Use ...

May 27, 2025 · From off-grid camping to emergency backup, the 100W solar panel is now among the most sought-after options for portable power enthusiasts. It's lightweight, handy, and ...

What Size Inverter Do I Need for a 100 Watt Solar Panel

Wondering what size inverter you need for a 100 watt solar panel? Here's how to find the right inverter and calculate its size.

Contact Us

For technical specifications, project proposals, or partnership inquiries, please visit:

<https://walmerceltic.co.za>

Scan QR Code for More Information



<https://walmerceltic.co.za>