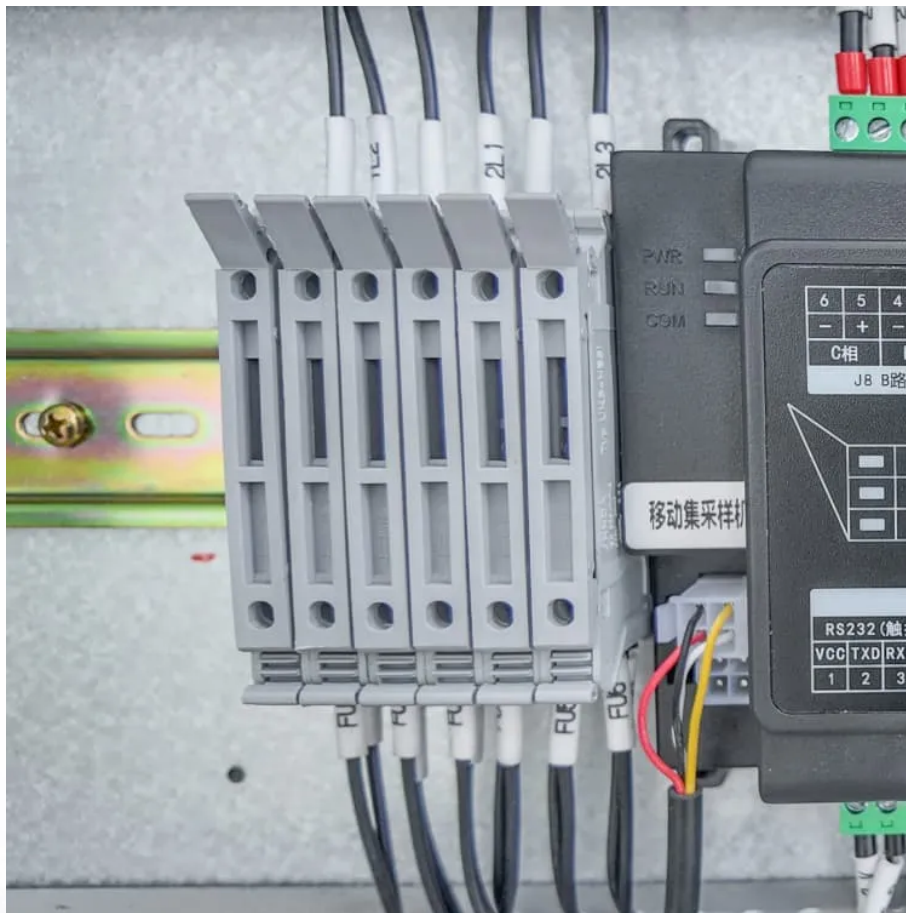


Battery cabinets are placed in the power distribution room





Overview

Where should a battery room be located?

It is usual practice to locate the battery rooms away from other equipment as they are in their own right hazardous components: fire/explosion, acid, stored energy. Monitoring equipment, control of personnel and protective equipment is needed for access to the battery rooms provided.

What type of batteries are used in energy storage cabinets?

Lithium batteries have become the most commonly used battery type in modern energy storage cabinets due to their high energy density, long life, low self-discharge rate and fast charge and discharge speed.

Why is a battery room important?

A well-designed battery room ensures safety, compliance, and optimal battery performance while facilitating maintenance and future expansion. free hydrogen venting calculator Designing Industrial Battery Rooms: Fundamentals and Standards Industrial battery rooms require careful design to ensure safety, compliance, and operational efficiency.

Where should batteries be installed in a substation?

Batteries installed in unit substations, electrical equipment rooms and instrument rack rooms shall comply with the requirements of this section, Main Substation Design and Unit Substation Design. In these locations, stainless steel hoods vented to the outside shall be installed over batteries.



Battery cabinets are placed in the power distribution room

Designing Industrial Battery Rooms: Fundamentals and ...

Designing Industrial Battery Rooms: Fundamentals and Standards Industrial battery rooms require careful design to ensure safety, compliance, and operational efficiency. This article ...

Battery Room

Battery Room In subject area: Engineering A battery room is defined as a designated area for backup and uninterruptible power supplies (UPS) that houses large lead storage batteries, ...

Installation specification for UPS battery cabinets and racks

Aug 7, 2024 · UPS battery cabinet and battery rack installation specifications. UPS battery cabinet is an intelligent power distribution cabinet that comprehensively collects all energy data for the ...

Battery Room Design Requirements - PAKTECHPOINT

It does not cover maintenance free or computer room type batteries and battery cabinets. Main keywords for this article are Battery Room Design Requirements, vented lead acid batteries, ...

How to design an energy storage cabinet: integration and ...

Jan 3, 2025 · This article will introduce in detail how to design an energy storage cabinet device, and focus on how to integrate key components such as PCS (power conversion system), EMS ...

Why Should Battery Cabinets Be Installed in Distribution ...

Nov 8, 2025 · A distribution room is a crucial component of the power system, distributing electricity from power plants or substations to meet the power needs of different users. ...

Tips for Designing Battery Cabinets/Enclosures , SBS Battery

Jan 16, 2025 · Calculating Cabinet Height Chargers need room to breathe and batteries need extra room above for maintenance (watering and testing). To calculate the minimum height of ...

Considerations For Battery Room Design, Battery Stands and ...

This article looks at the preferred designs for battery rooms and discusses how batteries should be laid out to give a safe environment. Alternative battery stand types are discussed to ...

Battery Room Design Requirements - PAKTECHPOINT

Battery Room References Battery Room Design Requirements Location of Battery Room Layout of Battery Room Battery Room Architectural Requirements Battery Room Ventilation & HVAC Battery Room Safety Requirements Battery Installations in Unit Substations and Equipment Rooms Battery Room storage Cabinet The battery shall be located as close as practical to the load. This will reduce the cost and exposure of the dc distribution system. The battery room shall be located in a way that provides access for lifting equipment to be used during initial installation and future maintenance



operations. The location shall be as free from vibration as practical. The battery shall be located as close as practical to the load. This will reduce the cost and exposure of the dc distribution system. The battery room shall be located in a way that provides access for lifting equipment to be used during initial installation and future maintenance operations. The location shall be as free from vibration as practical. The location shall be selected so as to protect the battery from flooding and other natural phenomena, and from fire and explosions in the operating areas. See more New content will be added above the current area of focus upon selection See more on paktechpoint Blue Box Batteries Considerations For Battery Room Design, Battery Stands and ... This article looks at the preferred designs for battery rooms and discusses how batteries should be laid out to give a safe environment. Alternative battery stand types are discussed to ...

How to connect the energy storage cabinet to the power ...

How to connect the energy storage cabinet to the power distribution room Battery Energy Storage System (BESS) is one of Distribution's strategic programmes/technology. It is aimed at ...

What Are the Critical Components of a Data Center Battery Room

Feb 17, 2025 · A data center battery room houses backup power systems, primarily uninterruptible power supply (UPS) batteries, to ensure continuous operations during grid ...

Contact Us

For technical specifications, project proposals, or partnership inquiries, please visit:

<https://walmerceltic.co.za>

Scan QR Code for More Information





<https://walmerceltic.co.za>