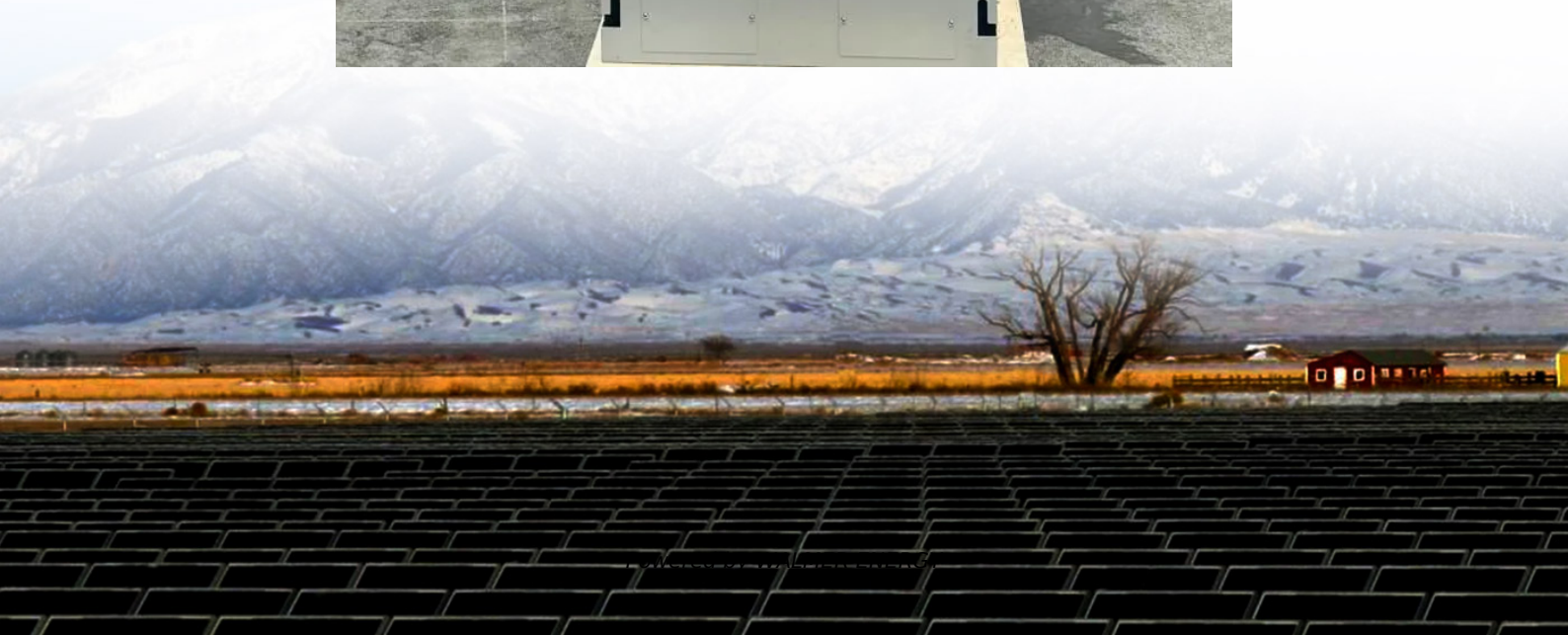


Calculate the power generation of solar panels using power





Overview

How do you calculate kWh generation of a solar panel?

The daily kWh generation of a solar panel can be calculated using the following formula: The power rating of the solar panel in watts \times — Average hours of direct sunlight = Daily watt-hours. Consider a solar panel with a power output of 300 watts and six hours of direct sunlight per day. The formula is as follows:.

How do you calculate solar power?

1. Basic Formula to Calculate Solar Power The general formula is: Power Output (Watts) = Panel Wattage \times Sun Hours \times Number of Panels \times System Efficiency To calculate the energy produced per day (in kilowatt-hours): Daily Output (kWh) = (Total Watts \times Sun Hours \times Efficiency) \div 1000.

How to calculate annual energy output of a photovoltaic solar installation?

Here you will learn how to calculate the annual energy output of a photovoltaic solar installation. r is the yield of the solar panel given by the ratio : electrical power (in kWp) of one solar panel divided by the area of one panel. Example : the solar panel yield of a PV module of 250 Wp with an area of 1.6 m² is 15.6%.

How to calculate solar panel output?

The first factor in calculating solar panel output is the power rating. There are mainly 3 different classes of solar panels: Small solar panels: 50W and 100W panels. Standard solar panels: 200W, 250W, 300W, 350W, 500W panels. There are a lot of in-between power ratings like 265W, for example. Big solar panel system: 1kW, 4kW, 5kW, 10kW system.



Calculate the power generation of solar panels using power

Solar Energy Generation Calculator

Oct 3, 2024 · The potential energy generation from a solar panel system depends on several factors, including the area covered by the panels, the efficiency of the panels, and the amount ...

Calculate the power generation formula of photovoltaic ...

The formula for calculating the power generation of a solar panel is average sunshine duration & #215; solar panel wattage & #215; 75% = daily watt-hours. 75% accounts for all the above ...

Solar Panel kWh Calculator: kWh Production Per Day, Month, ...

1 day ago · Solar Output = Wattage × Peak Sun Hours × 0.75 Based on this solar panel output equation, we will explain how you can calculate how many kWh per day your solar panel will ...

Solar Panel Power Calculation: A Detailed Guide for Efficient ...

Oct 17, 2024 · Learn how to calculate solar panel power output effectively with our comprehensive guide. Explore essential methods and factors for designing efficient photovoltaic systems to ...

How to calculate the annual solar energy output of a photovoltaic ...

Apr 22, 2025 · PV energy simulation : How to calculate the output energy or power of a solar photovoltaic system or panel.

How to Calculate Solar Panel kWh

Nov 17, 2023 · How to Calculate Solar Panel kWh: To find the power in kWh, consider panel size, efficiency, and the output per square meter of panels.

A Guide To Calculate The Electricity ...

Aug 16, 2024 · The power generation of a solar power system should be estimated based on local solar energy resources and various factors such ...

How to Calculate the Power Generated by ...

May 24, 2025 · Learn how to calculate the power output of solar panels in watts, kilowatt-hours, and real conditions. This guide covers all key ...

How to Calculate the Power Generation of a ...

Aug 17, 2022 · As an example: Let's say you live in a place with about 5 hours of average sunshine and the panels are rated at 200 watts. ...

How to Calculate the Power Generated by Solar Panels: A ...

May 24, 2025 · Learn how to calculate the power output of solar panels in watts, kilowatt-



hours, and real conditions. This guide covers all key factors including panel wattage, sunlight hours, ...

A Guide To Calculate The Electricity Generation Of Solar Power ...

Aug 16, 2024 · The power generation of a solar power system should be estimated based on local solar energy resources and various factors such as the solar mounting structure design, array ...

How to Calculate the Power Generation of a Solar Panel?

Aug 17, 2022 · As an example: Let's say you live in a place with about 5 hours of average sunshine and the panels are rated at 200 watts. Calculate the power generation of the solar ...

Calculation of daily power generation of solar panels

The daily kWh generation of a solar panel can be calculated using the following formula: The power rating of the solar panel in watts & #215;-- Average hours of direct sunlight = Daily watt ...

Contact Us

For technical specifications, project proposals, or partnership inquiries, please visit:

<https://walmerceltic.co.za>

Scan QR Code for More Information





<https://walmerceltic.co.za>