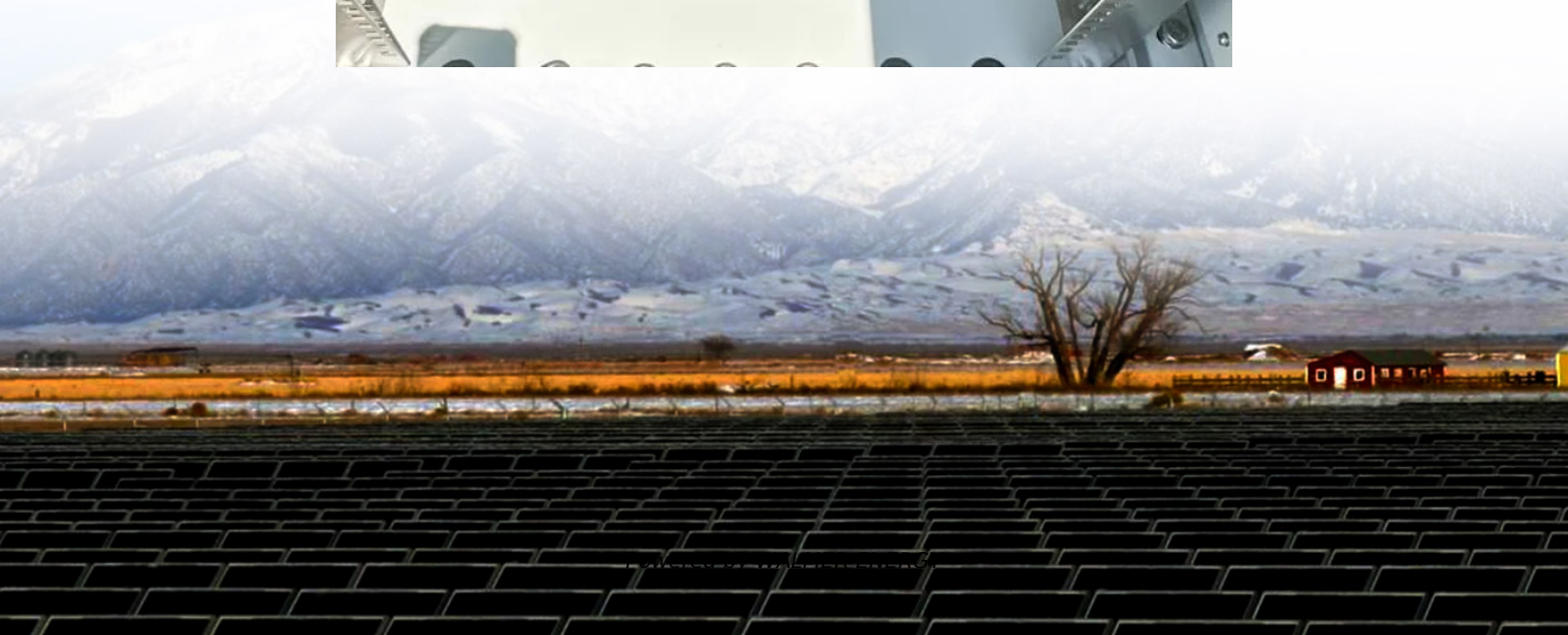


# **Can base station battery packs be connected in series**





## Overview

---

Lithium batteries are connected in series when the goal is to increase the nominal voltage rating of one individual lithium battery - by connecting it in series strings with at least one more of the same type and specification - to meet the nominal operating voltage of the system the batteries are being installed to support. How do you connect a battery pack?

There are two main ways to connect battery packs: series and parallel, and a mixture of series and parallel. Battery series connection refers to connecting the positive and negative electrodes of multiple batteries in sequence to form a circuit.

What is a battery in series vs parallel connection?

Batteries in series vs parallel connection are two basic ways to connect battery packs, each with its own advantages and disadvantages and applicable scenarios.

Why should you connect a lithium battery pack in series or parallel?

Connecting together well-matched lithium battery packs in series or parallel allows increasing capacity or voltage compared to using just a single pack. Pay special attention to safety. Following best practices during mechanical and electrical integration keeps your custom battery banks running optimally.

Can a battery be connected in series?

When connecting batteries in series: Never cross the remaining open positive and negative terminals with each other, as this will short-circuit the batteries and cause damage or injury. The other type of connection is parallel. Parallel connections will increase your capacity rating, but the voltage will stay the same.



## Can base station battery packs be connected in series

---

### How to Put 2 Battery Packs Together?

Jun 9, 2025 · In this comprehensive guide, I'll explain step-by-step how to properly connect two battery packs in series or parallel to create a safe, ...

---

### Lithium Series, Parallel and Series and Parallel

Introduction1. What is a BMS? Why do you need a BMS in your lithium battery?The lithium battery BMS, its design and primary purpose:2. How to connect lithium batteries in series4. How to charge lithium batteries in parallel4.1 Resistance is the enemy4.2 How to charge lithium batteries in parallel - from bad to best designsLithium battery banks using batteries with built-in Battery Management Systems (BMS) are created by connecting two or more batteries together to support a single application. Connecting multiple lithium batteries into a string of batteries allows us to build a battery bank with the potential to operate at an increased voltage, or with increased capacity. See more on assets.discoverbattery RenogySeries, Parallel, and Series-Parallel ...Learn battery connections: series, parallel, and series-parallel setups. Ensure safety, maximize performance, and extend battery lifecycles.

---

### Lithium Series, Parallel and Series and Parallel

Mar 23, 2021 · Lithium Series, Parallel and Series and Parallel Connections Introduction Lithium battery banks using batteries with built-in Battery Management Systems (BMS) are created by ...

---

### Battery Series and Parallel Connection Calculator

Jun 16, 2024 · Battery Series and Parallel Connection Calculator Battery Voltage (V): Battery Capacity (Ah): Number of Batteries: Calculate Linking multiple batteries either in series or ...

---

### Batteries in Parallel vs. Series: What Are the ...

May 12, 2025 · This article explores how batteries are connected--whether in series or parallel--highlighting the benefits and drawbacks of each. ...

---

### 3. Battery bank wiring

Aug 30, 2024 · In a series/parallel battery bank it can be helpful to connect the midpoints of each parallel series string. The reason to do this is to ...

---

### What are the implications of connecting lithium battery packs in series?

Apr 25, 2021 · The concern with series-connected batteries of any type is uneven charge/discharge rates within the string of cells. This can cause overcharging of some cells, ...

---

### Running 2 or more BMS in series

May 15, 2017 · It's when things go wrong that concerns me. Every EV I've ever built used multiple BMS on separate battery packs in parallel, but ...

---

### Batteries in series vs parallel connection: Advantages, ...



Sep 16, 2025 · This article will explore the differences, advantages and disadvantages, and applicable scenarios of batteries in series vs parallel connection in depth to help readers fully ...

---

Connect Batteries in Series and Parallel: ...

Mar 18, 2025 · Are you frustrated trying to figure out how to boost your battery system's power? I get it--choosing between series and parallel ...

---

Can a lithium battery pack be used in series?

May 28, 2025 · In electric bikes and scooters, series - connected lithium battery packs are used to provide the necessary power for the motor. The ...

---

Understanding Battery Pack Configurations: Series vs.

Feb 17, 2025 · This means the battery pack can power a 3.6V device for twice as long as a single cell and supply twice the current for high-power applications. Combining Series and Parallel (S ...

---

Can lithium battery cells be connected in series?

Jul 24, 2025 · By connecting a large number of lithium battery cells in series, manufacturers can create battery packs with the voltage and capacity required to power the vehicle for a ...

---

How To Connect Batteries In Series and ...

Dec 1, 2025 · Learn how to configure batteries in series, parallel, or series and parallel. Complete battery configuration guide for increased power at ...

---

How to Put 2 Battery Packs Together?

Jun 9, 2025 · In this comprehensive guide, I'll explain step-by-step how to properly connect two battery packs in series or parallel to create a safe, higher-performance battery bank for your ...

---

Batteries in series vs parallel connection: ...

Sep 16, 2025 · This article will explore the differences, advantages and disadvantages, and applicable scenarios of batteries in series vs parallel ...

---

Can lithium battery cells be connected in ...

Jul 24, 2025 · By connecting a large number of lithium battery cells in series, manufacturers can create battery packs with the voltage and capacity ...

---

Battery Basics: Series & Parallel Connections ...

2 days ago · Battery connections play a crucial role in the performance and efficiency of battery systems. Understanding the basics of series and ...

---

How To Connect Batteries In Series and Parallel

Dec 1, 2025 · Learn how to configure batteries in series, parallel, or series and parallel. Complete battery configuration guide for increased power at BatteryStuff !

---



### Batteries in Series and Batteries in Parallel

Feb 24, 2012 · Key learnings: Battery Cells Definition: A battery is defined as a device where chemical reactions produce electrical potential, and ...

---

### 3. Battery bank wiring

Aug 30, 2024 · In a series/parallel battery bank it can be helpful to connect the midpoints of each parallel series string. The reason to do this is to eliminate unbalance within the battery bank.

---

### Series, Parallel, and Series-Parallel Connections of Batteries

Learn battery connections: series, parallel, and series-parallel setups. Ensure safety, maximize performance, and extend battery lifecycles.

---

### Telecom Base Station Backup Power Solution: ...

Jun 5, 2025 · Discover the 48V 100Ah LiFePO4 battery pack for telecom base stations: safe, long-lasting, and eco-friendly. Optimize reliability with ...

---

### Can a lithium battery pack be used in series?

May 28, 2025 · In electric bikes and scooters, series - connected lithium battery packs are used to provide the necessary power for the motor. The ability to customize the voltage by connecting ...

---

## Contact Us

---

For technical specifications, project proposals, or partnership inquiries, please visit:

<https://walmerceltic.co.za>

**Scan QR Code for More Information**



<https://walmerceltic.co.za>