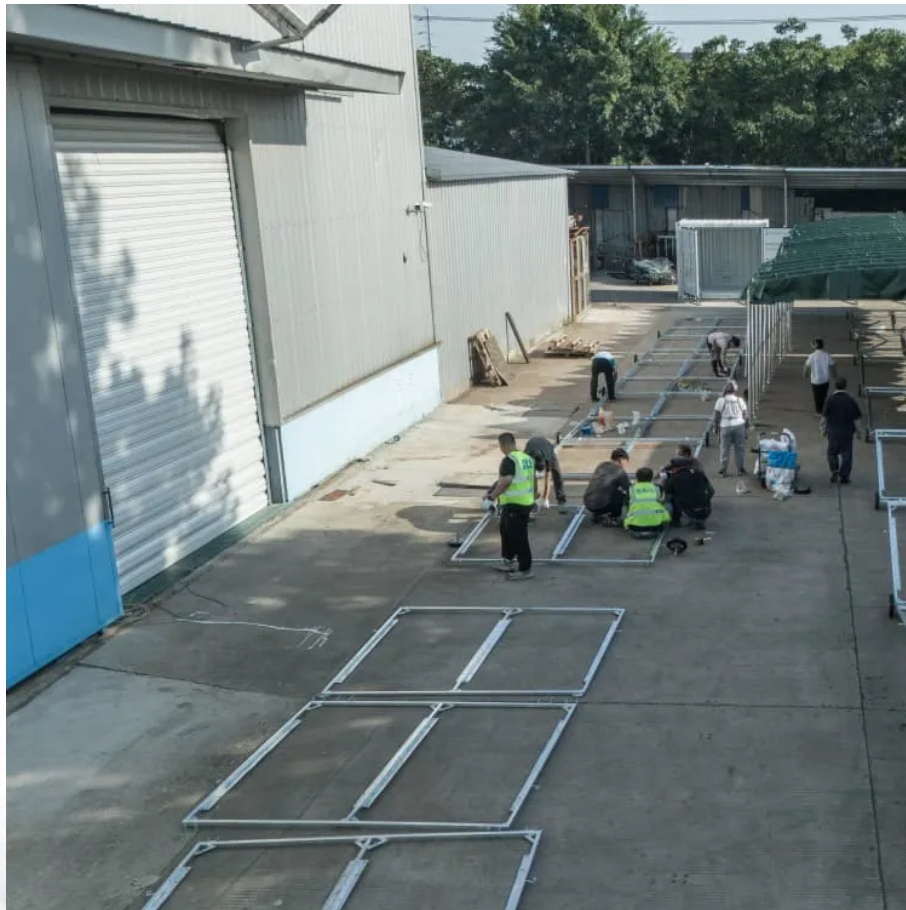


# **How big a battery should a 2200w inverter be equipped with**





## Overview

---

What is the recommended battery size for an inverter?

Interpreting Results: Once you input the required data, the calculator will generate the recommended battery size in ampere-hours (Ah). For instance, if your power consumption is 500 watts, the usage time is 4 hours, and the inverter efficiency is 90%, the calculator might suggest a battery size of approximately 222 Ah.

How much battery should a 500 watt inverter use?

For instance, if your power consumption is 500 watts, the usage time is 4 hours, and the inverter efficiency is 90%, the calculator might suggest a battery size of approximately 222 Ah. Practical Tips: Ensure all input values are accurate to avoid skewed results.

Why should you use the calculate battery size for inverter calculator?

Using the Calculate Battery Size for Inverter Calculator can significantly streamline your power management process. This tool is particularly beneficial in scenarios where precise power estimation is critical, such as designing renewable energy systems, ensuring backup power in off-grid locations, or optimizing battery usage for cost efficiency.

What battery should I use to run a 2,000w inverter?

Here are the recommended battery voltages with corresponding inverter sizes: Now that you know you should use a 24V battery to run a 2,000W inverter, we can look at the capacity and the C-rate. The capacity of the battery is indicated in amp hours or simply Ah. The most common battery will be 12V and 100Ah.



## How big a battery should a 2200w inverter be equipped with

---

How to Calculate the Right Battery Size for ...

Calculating the correct battery size ensures that your inverter system can meet your power needs without leaving you in the dark during outages. ...

---

Calculate Battery Size for Inverter Calculator

Mar 14, 2025 · The Calculate Battery Size for Inverter Calculator helps you determine the optimal battery capacity needed to support your inverter ...

---

Inverter Sizing: Can Your Inverter Be Too Big For Your Battery ...

Apr 14, 2025 · An inverter can indeed be too big for your battery bank. An oversized inverter might waste energy and raise operating costs. To prevent this, ensure the inverter size matches your ...

---

How big a battery and inverter should a home be equipped with ...

How to choose a solar inverter? It's essential to select an inverter with a continuous power rating that meets or exceeds your daily energy needs and a peak power rating that can handle any ...

---

How Many Batteries for a 2000 watt Inverter? + Diagrams

Mar 7, 2023 · Do you need to know how many batteries you need for a 2,000W inverter? Read this article for calculations and diagrams of different battery configurations.

---

How to Calculate the Right Inverter Battery Capacity for Your Needs

Feb 24, 2025 · Learn how to calculate the right inverter battery capacity for your needs with a simple formula. Understand ...

---

How to Calculate the Right Battery Size for Your Inverter ...

Calculating the correct battery size ensures that your inverter system can meet your power needs without leaving you in the dark during outages. An undersized battery may not provide enough ...

---

Calculate Battery Size For Any Size Inverter (Using Our ...

Mar 3, 2023 · Pairing a right size capacity battery for an inverter can be a bit confusing for most the beginners So I have made it easy for you, use the calculator below to calculate the battery ...

---

Solar Inverter & Battery Sizing Calculator

Apr 30, 2025 · Choosing the correct inverter and battery size is crucial for every microgrid system. Our Solar Inverter and Battery Sizing Calculator ...

---



### How to Calculate the Right Inverter Battery Capacity for Your ...

Feb 24, 2025 · Learn how to calculate the right inverter battery capacity for your needs with a simple formula. Understand power requirements, efficiency losses, and the best battery types ...

---

### Solar Inverter & Battery Sizing Calculator

Apr 30, 2025 · Choosing the correct inverter and battery size is crucial for every microgrid system. Our Solar Inverter and Battery Sizing Calculator provides a simple and user-friendly solution.

---

### Calculate Battery Size for Inverter Calculator

Mar 14, 2025 · The Calculate Battery Size for Inverter Calculator helps you determine the optimal battery capacity needed to support your inverter system. By inputting critical parameters such ...

---

### Battery to Inverter Calculator

Jan 14, 2024 · The inverter battery runtime can be calculated using a battery to inverter calculator, which takes into account the size of your battery and the power requirements of your inverter.

---

### Can an Inverter Be Too Big for Your Battery System?

Why Battery Chemistry Matters in Inverter Sizing Lithium-ion batteries tolerate higher discharge rates (up to 1C) compared to lead-acid (0.5C). A 100Ah LiFePO4 battery can safely power a ...

---

### How Many Batteries for a 2000 watt Inverter?

Mar 7, 2023 · Do you need to know how many batteries you need for a 2,000W inverter? Read this article for calculations and diagrams of ...

---

## Contact Us

---

For technical specifications, project proposals, or partnership inquiries, please visit:

<https://walmerceltic.co.za>

**Scan QR Code for More Information**



<https://walmerceltic.co.za>