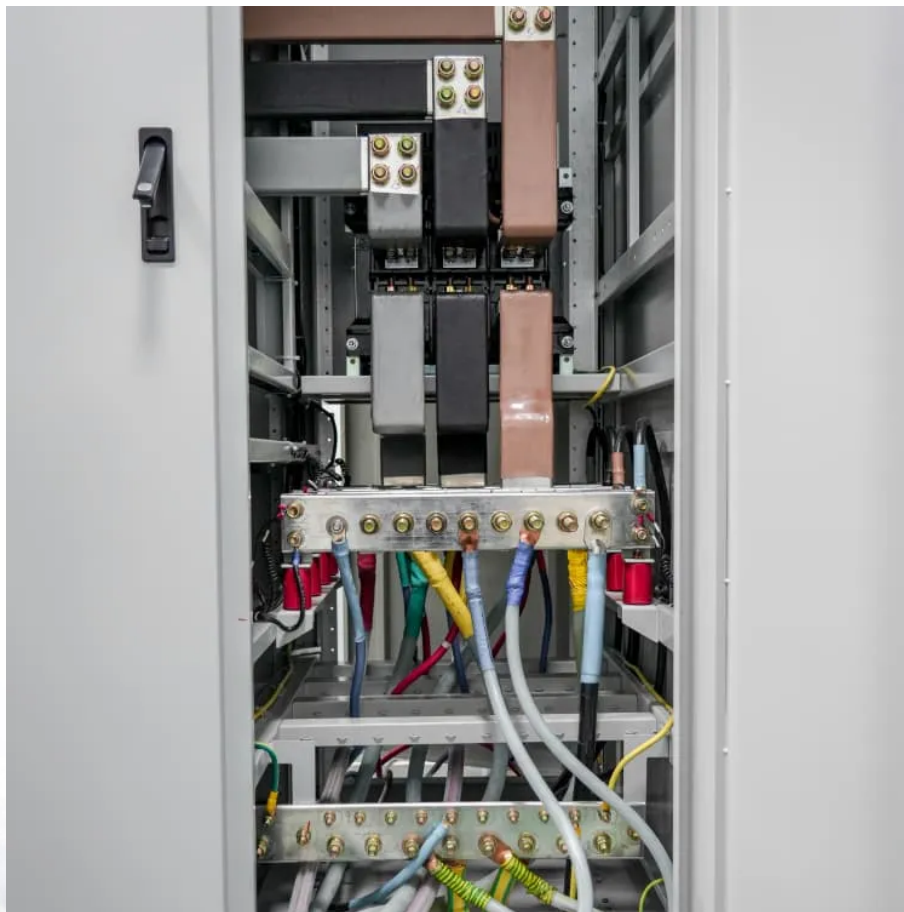


# **Is the base station lightning protection box installed outdoors**





## Overview

---

What is a lightning protection system?

A lightning protection system provides optimal protection by coordinating both the external and internal lightning protection segments: The external lightning protection system consists of an air termination system, down conductor and earth-termination system.

How should a lightning protection System (RBS) be formed?

The earthing network of an RBS should be formed by a ring loop surrounding the tower, equipment room and fence, at a minimum. The mean radius  $r_e$  of this ring loop should be not less than  $l_1$ , as indicated in Figure 1 and this value depends on the lightning protection system (LPS) class and on the soil resistivity.

What is the difference between external and internal lightning protection systems?

The external lightning protection system consists of an air termination system, down conductor and earth-termination system. The internal lightning protection system encompasses lightning equipotential bonding and surge protective devices. Protection Components inside the Surge Protection Device.

Are rooftop antennas protected from lightning strikes?

If the antenna is installed on the rooftop, e.g., antenna positions 2 of Figure 29, depending on the relative height of building and the installation of the antenna system, it may be considered to be inherently protected from direct lightning strikes or be impacted by or exposed to direct lightning strikes.



## Is the base station lightning protection box installed outdoors

---

research on lightning protection and grounding safety ...

May 29, 2022 · Building 5g base station on power tower is an effective way to realize resource integration and save national resources. However, the voltage level and installed capacity of ...

---

ITU-T Rec. K.112 (07/2019) Lightning protection, ...

Summary Recommendation ITU-T K.112 provides a set of practical procedures related to the lightning protection, earthing and bonding of radio base stations (RBSs). It considers two types ...

---

The difference between lightning protection ...

Apr 6, 2024 · The difference between lightning protection module and lightning protection box With the advancement and development of the ...

---

How Are Base Stations Protected Against Lightning?

Oct 28, 2025 · 4. Lightning Protection for Distributed Base Stations Distributed base stations are often deployed with the BBU co-located and must avoid introducing connections that ...

---

Lightning and Surge Protection for Cell Sites & 5G Macro Base Stations

Dec 18, 2023 · The tower-mounted amplifier is exposed to the outdoor environment and needs protection from lightning strikes and ESD. This circuit should have a series fuse to protect ...

---

LIGHTNING PROTECTION SOLUTION FOR BASE STATION

May 23, 2023 · Therefore, the LPS protection of the base station must be considered with the entire picture in mind, and designed from the perspective of the overall lightning protection ...

---

The difference between lightning protection module and lightning

Apr 6, 2024 · The difference between lightning protection module and lightning protection box With the advancement and development of the power system and the advent of the digital and ...

---

Wireless Network Base Station AC and DC Power Line ...

Wireless network base stations need protection from overvoltage and overcurrents. These conditions are due to lightning strikes, power line accidents, and other disturbances. Most ...

---

Lightning and Surge Protection for Communication Station

Jun 23, 2025 · Install lightning rods, grounding, surge protectors, shielding, and follow standards for effective communication station protection.

---

Is it necessary to do first-level lightning protection for the

Discover the details of Is it necessary to do first-level lightning protection for the distribution box installed outdoors? at Guangdong Uchi Technology Co.,Ltd, a leading supplier in China for ...

---



## Lightning Protection and Grounding

Lightning Protection and Grounding This section describes the lightning protection and grounding requirements. Ensure that the equipment room meets the requirements because lightning is ...

---

## LIGHTNING PROTECTION SOLUTION FOR ...

May 23, 2023 · Therefore, the LPS protection of the base station must be considered with the entire picture in mind, and designed from the ...

---

## Lightning and Surge Protection for Cell Sites ...

Dec 18, 2023 · The tower-mounted amplifier is exposed to the outdoor environment and needs protection from lightning strikes and ESD. This ...

---

## Contact Us

---

For technical specifications, project proposals, or partnership inquiries, please visit:

<https://walmerceltic.co.za>

## Scan QR Code for More Information



<https://walmerceltic.co.za>