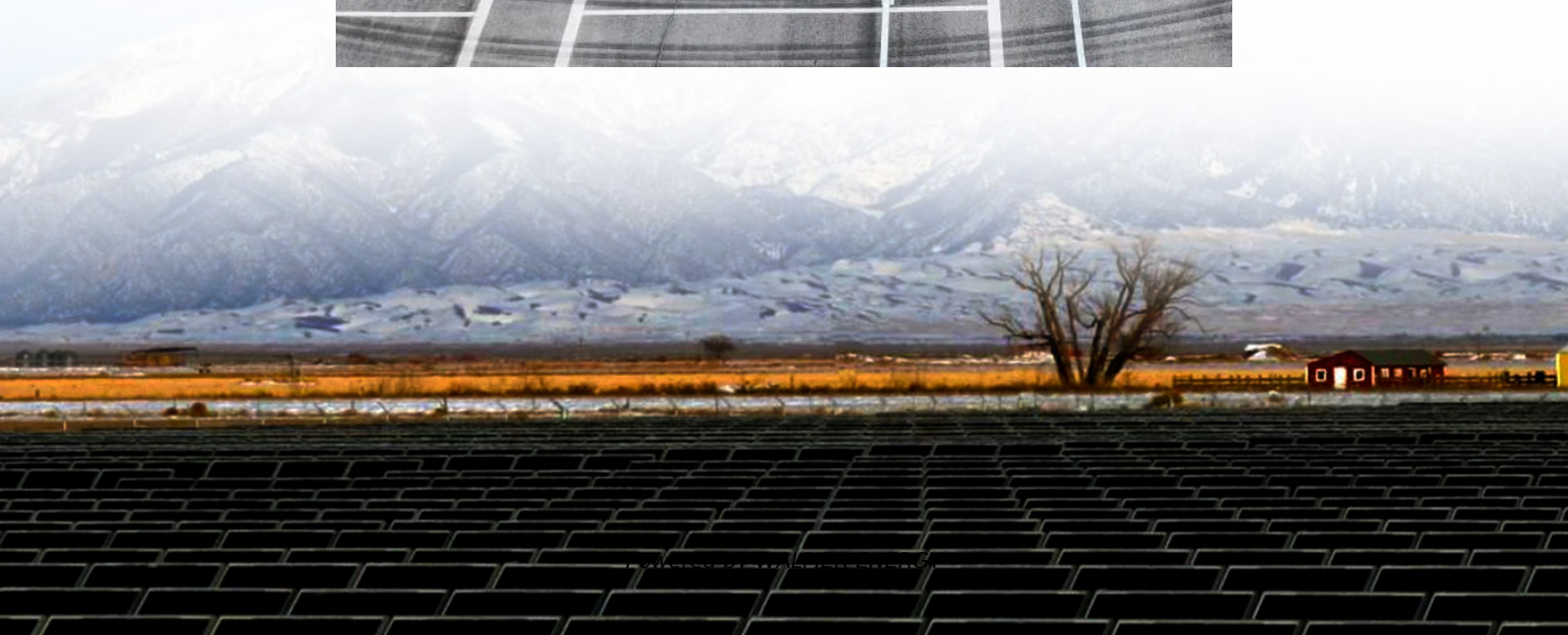
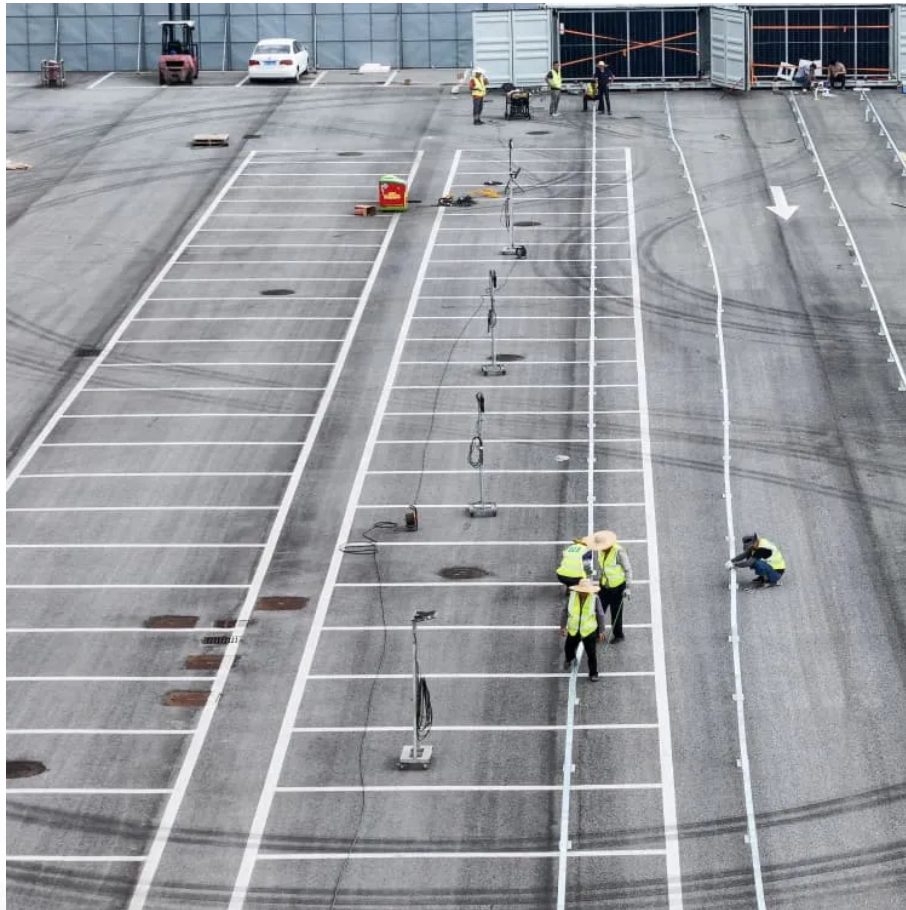


# What are the requirements for outdoor base stations





## Overview

---

Mobile phones and other mobile devices require a network of base stations in order to function. The base station antennas transmit and receive RF (radio frequency) signals, or radio waves, to and from.

What are base station active antenna system standards?

Our latest “Recommendation on Base Station Active Antenna System Standards” provides the industry with an updated set of parameter definitions, measurement methodologies and reporting processes. This enables a uniform way to describe the electrical and mechanical characteristics of the network side of the radio link (the “base station antenna”).

What should I know before setting up a base station?

Before you set up a base station, please see Base station operation guidelines. For construction applications, where machine and site positioning operations using GNSS will be carried out over a long time (weeks, months, or years), ensure that you carefully choose the base station location.

What are the different types of base stations?

Some basic types of base stations are as follows: Macro-base stations are tall towers ranging from 50 to 200 feet in height, placed at strategic locations to provide maximum coverage in a given area. Those are equipped with large towers and antennas that transmit and receive radio signals from wireless devices.

Do mobile phones need a base station?

Mobile phones and other mobile devices require a network of base stations in order to function. The base station antennas transmit and receive RF (radio frequency) signals, or radio waves, to and from mobile phones near the base station. Without these radio waves, mobile communications would not be possible.



## What are the requirements for outdoor base stations

---

### Wireless Survey And Design Of Outdoor Base Stations

The design and layout of the base station is the primary work of network planning, including the content is to determine the frequency multiplexing mode according to the width of the ...

---

### Application Note: Distributed Base Stations

Distributed Base Stations The most popular type of Wireless Base Station deployment (cell site) consists of a Base Transceiver Station (BTS) located in close proximity to the antenna tower. ...

---

### Base stations and networks

5 days ago · Base station output power is relatively low The antenna output power level is typically between 20 watts and a few hundred watts for an outdoor base station. Television ...

---

### Base Stations

Jul 23, 2025 · The present-day tele-space is incomplete without the base stations as these constitute an important part of the modern-day scheme of wireless communications. They are ...

---

### Optimizing the ultra-dense 5G base stations in urban outdoor ...

Dec 1, 2020 · Due to the high propagation loss and blockage-sensitive characteristics of millimeter waves (mmWaves), constructing fifth-generation (5G) cellular networks involves deploying ...

---

### EV Charging Station Installation: Key Requirements & Tips

2 days ago · The global shift towards electric vehicles (EVs) has made the installation of EV charging stations a critical ...

---

### Recommendation on Base Station Active Antenna System ...

Sep 18, 2023 · Our latest "Recommendation on Base Station Active Antenna System Standards" provides the industry with an updated set of parameter definitions, measurement ...

---

### Recommendation on Base Station Active ...

Sep 18, 2023 · Our latest "Recommendation on Base Station Active Antenna System Standards" provides the industry with an updated set of ...

---

### Electrical Conduit 101: NEC Code Compliance ...

Nov 4, 2024 · In this post, we will explore the latest NEC code requirements for EV charging stations and make clear electrical conduit systems, ...

---

### Types of Base Stations

Jul 23, 2025 · Base stations are one of the widely used components in the field of wireless communication and networks. It is an access point or ...

---



## Annex: Base-Station Site Solutions

Apr 17, 2025 · In earlier days, the Global System Mobile (GSM) base stations used to be housed in large racks installed indoors in air-conditioned rooms. This chapter provides an example of ...

---

## Common ways to set up a base station

Oct 23, 2025 · You can set up a base station in different ways depending on the application, coverage area, degree of permanence versus mobility, and available infrastructure.

---

## Embrace the outdoor

Cost savings and efficiency: Embracing outdoor base stations eliminates the need for expensive shelters and air conditioning units, resulting in significant cost savings in infrastructure setup ...

---

## Complete Guide to 5G Base Station ...

Nov 17, 2024 · Explore how 5G base stations are built--from site planning and cabinet installation to power systems and cooling solutions. Learn the ...

---

## Common ways to set up a base station

Oct 23, 2025 · You can set up a base station in different ways depending on the application, coverage area, degree of permanence versus mobility, ...

---

## Offshore Substations and Electrical Service Platforms

Mar 28, 2024 · Classification The requirements for conditions of classification are contained in the ABS Rules for Conditions of Classification - Offshore Units and Structures (Part 1). Additional ...

---

## Key NFPA Standards Pertaining to Generators

Dec 7, 2020 · Key NFPA standards that affect your generator The National Fire Protection Agency (NFPA) is an independent standards organization ...

---

## The big list of EV charging station standards and specs

Aug 16, 2023 · As electric vehicles become more popular, there is a growing demand for EV charging stations in residential and commercial settings. But for new station operators, there ...

---

## Outdoor communication base station equipment ...

Nov 4, 2025 · Power Requirements: Base stations operate on 120V AC power rather than 12V DC, requiring either built-in power supplies or separate AC-to-DC converters. Size and ...

---

## Base Station Class

Base station classes refer to the categorization of base stations into wide area, medium range, and local area types, each defined by specific RF requirements and deployment scenarios, ...

---

## NFPA 110 Standard Overview on Generator ...

Jan 8, 2025 · Understand NFPA 110 generator requirements for emergency and standby power systems. Learn about generator ratings, transfer ...

---



#### Macro Cell Base Station

Even small cells (medium-range base stations and local-area base stations) require a sub-1 dB NF for the first LNA in the receive path. The linearity requirements for the receiver are ...

---

#### Nova-246 Outdoor Base Station

Nov 28, 2025 · 2.3.1 Locational Requirements Environments with high-temperatures, harmful gases, unstable voltages, volatile vibrations, loud noises, flames, explosives, and ...

---

## Contact Us

---

For technical specifications, project proposals, or partnership inquiries, please visit:

<https://walmerceltic.co.za>

## Scan QR Code for More Information



<https://walmerceltic.co.za>