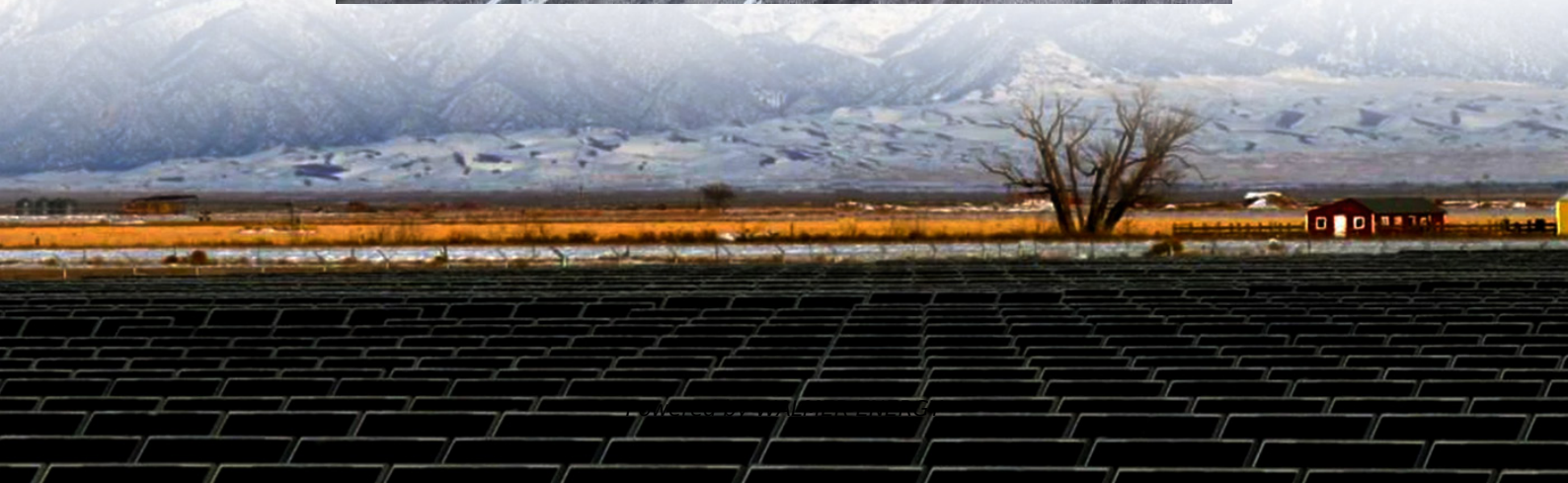
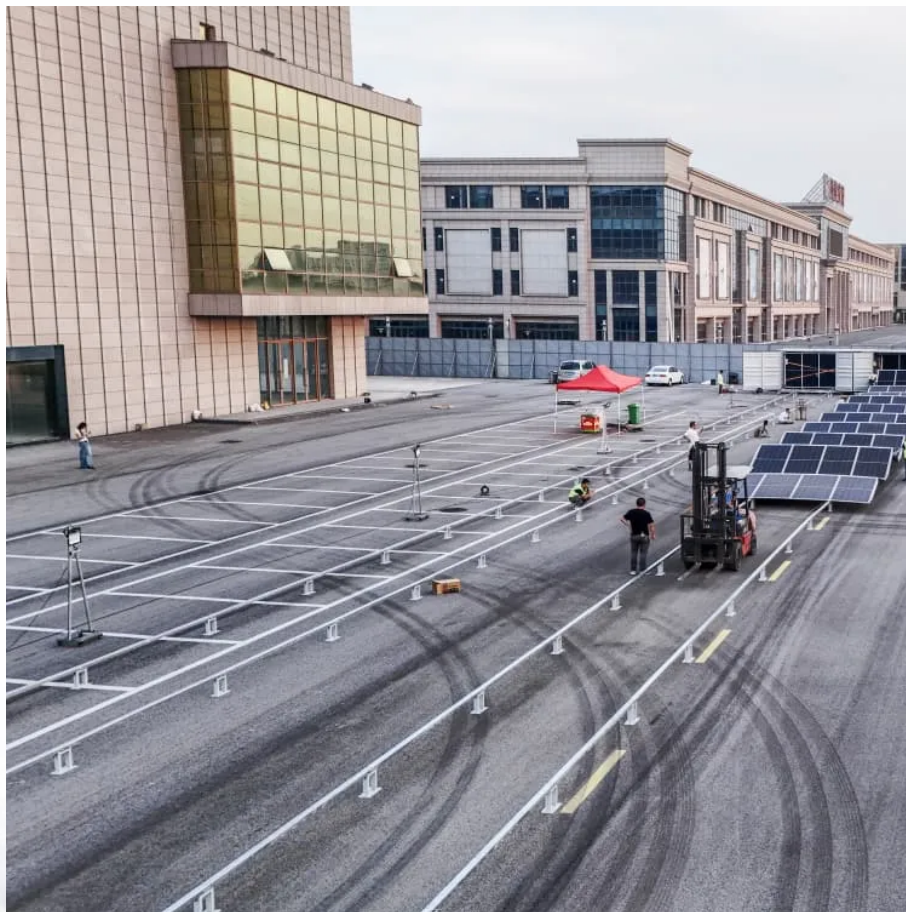


# **What is the low temperature of the lithium iron phosphate battery station cabinet**





## Overview

---

At low temperatures—typically below 0°C—the performance of Lithium Iron Phosphate Battery systems begins to degrade. Why is lithium iron phosphate a bad battery?

Lithium iron phosphate battery works harder and lose the vast majority of energy and capacity at the temperature below  $-20^{\circ}\text{C}$ , because electron transfer resistance ( $R_{ct}$ ) increases at low-temperature lithium-ion batteries, and lithium-ion batteries can hardly charge at  $-10^{\circ}\text{C}$ . Serious performance attenuation limits its application in cold environments.

Can lithium iron phosphate batteries discharge at  $60^{\circ}\text{C}$ ?

Compared with the research results of lithium iron phosphate in the past 3 years, it is found that this technological innovation has obvious advantages, lithium iron phosphate batteries can discharge at  $-60^{\circ}\text{C}$ , and low temperature discharge capacity is higher. Table 5. Comparison of low temperature discharge capacity of  $\text{LiFePO}_4 / \text{C}$  samples.

How does low temperature affect lithium ion batteries?

However, its energy conversion and storage capacity decay rapidly at low temperatures (below  $0^{\circ}\text{C}$ ), resulting in degradation or failure of battery performance, increasing the use cost and risk of lithium-ion batteries, reducing energy utilization, and seriously hindering the promotion and development of lithium-ion batteries , .

Does lithium iron phosphate affect low-temperature discharge performance?

Serious performance attenuation limits its application in cold environments. In this paper, according to the dynamic characteristics of charge and discharge of lithium-ion battery system, the structure of lithium iron phosphate is adjusted, and the nano-size has a significant impact on the low-temperature discharge performance.



## What is the low temperature of the lithium iron phosphate battery s

---

### Lithium Iron Phosphate

Lithium Iron Phosphate abbreviated as LFP is a lithium ion cathode material with graphite used as the anode. This cell chemistry is typically lower ...

---

### Lithium-iron Phosphate (LFP) Batteries: A to Z ...

Mar 28, 2023 · Lithium-ion batteries have become the go-to energy storage solution for electric vehicles and renewable energy systems due to their ...

---

### Mechanistic Investigation of Capacity Degradation in Lithium Iron

Aug 26, 2025 · Lithium iron phosphate (hereinafter all referred to as LFP) batteries are commonly used in electric vehicles due to their high energy density, long cycle life, low cost, and the ...

---

### The influence of iron site doping lithium iron phosphate on the low

Oct 29, 2024 · Lithium iron phosphate (LiFePO<sub>4</sub>) is emerging as a key cathode material for the next generation of high-performance lithium-ion batteries, owing to its unparalleled ...

---

### What Are the Causes Affecting the Low-Temperature ...

Jun 15, 2025 · Lithium iron phosphate (LFP) batteries are known for their long lifespan, high energy density, and excellent thermal stability. However, their performance can be significantly ...

---

### INTRODUCTION TO LITHIUM IRON PHOSPHATE ...

In contrast to lithium cobalt oxide or lead-acid systems, LiFePO<sub>4</sub> only has a low risk of "thermal runaway". This term refers to a process in which a battery continues to heat itself up through ...

---

### LiFePO<sub>4</sub> Temperature Range: Discharging, ...

In the realm of energy storage, lithium iron phosphate (LiFePO<sub>4</sub>) batteries have emerged as a popular choice due to their high energy density, long ...

---

### Temperature characteristics of lithium iron phosphate batteries

SOC-OCV curve of a certain lithium iron phosphate battery Discharge fully charged batteries in different ambient temperatures and discuss the relationship between the discharged capacity ...

---

### What is the Lowest Temperature to Charge a LiFePO<sub>4</sub> Battery?

Dec 25, 2023 · The lowest temperature to charge a LiFePO<sub>4</sub> battery is typically 32°F (0°C). Charging below this temperature can lead to lithium plating, which may damage the battery ...

---

### Lithium Battery for Low Temperature ...

Performance Features Designed specifically for cold weather applications such as off-grid power and cold storage material handling. RELiON's Low ...

---



### Low-Temperature Breakthrough Of Lithium ...

Aug 4, 2025 · Surface coating technology forms a "protective film". Coating the surface of lithium iron phosphate particles with a layer of LiPOv3 film, ...

---

### Enhancing low temperature properties through nano-structured lithium

Jan 5, 2025 · Lithium iron phosphate battery works harder and lose the vast majority of energy and capacity at the temperature below -20 ?, because electron transfer resistance (Rct) ...

---

### Performance Characteristics of Lithium Iron Phosphate ...

May 9, 2025 · Performance in Low-Temperature Environments At low temperatures--typically below 0°C--the performance of Lithium Iron Phosphate Battery systems begins to degrade. ...

---

### LiFePO4 Battery Extreme Temperature Guide: ...

Oct 28, 2024 · With the rise of green energy and the demand for reliable energy storage, the LiFePO4 battery (Lithium Iron Phosphate battery) has ...

---

### Factors affecting the low-temperature characteristics of lithium iron

Although lithium iron phosphate batteries have significant advantages over other rechargeable batteries in terms of cycle system lifespan and rechargeable battery multiples, their ...

---

### Low temperature hydrothermal synthesis of battery grade lithium iron

An energy consumption analysis indicates that the energy required for our synthesis is 30% less than for typical hydrothermal syntheses and is comparable to solid-state reactions used today, ...

---

### Low-Temperature Breakthrough Of Lithium Iron Phosphate ...

Aug 4, 2025 · Surface coating technology forms a "protective film". Coating the surface of lithium iron phosphate particles with a layer of LiPOv3 film, with a thickness of about 5nm, can reduce ...

---

### A Comprehensive Review of the Research Progress on the Low-Temperature

Lithium iron phosphate (LiFePO 4) serves as a commonly used cathode material in lithium-ion batteries and is an essential power source for consumer electronics and electric vehicles. ...

---

### Temperature characteristics of lithium iron ...

SOC-OCV curve of a certain lithium iron phosphate battery Discharge fully charged batteries in different ambient temperatures and discuss the ...

---

### Research on the Temperature Performance of a Lithium-Iron-Phosphate

Dec 1, 2022 · To improve the cruising range and mobility of EVs, various traction batteries (TBs) have been studied and widely used in China. The operation of EVs is difficult because of the ...

---



## Contact Us

---

For technical specifications, project proposals, or partnership inquiries, please visit:

<https://walmerceltic.co.za>

## Scan QR Code for More Information



<https://walmerceltic.co.za>